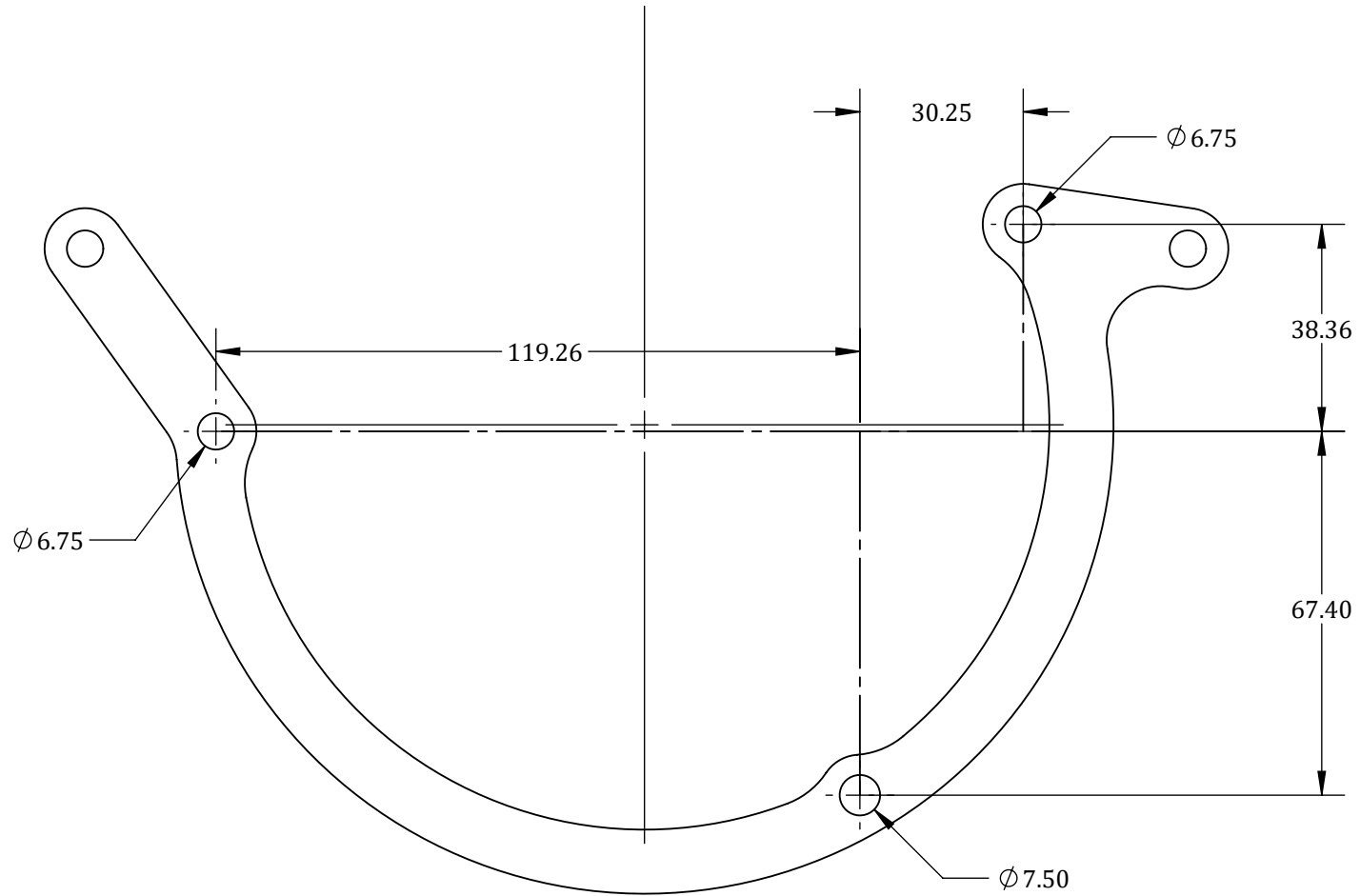


UNLESS OTHERWISE SPECIFIED:
 DIMENSIONS ARE IN MM
 TOLERANCES:
 FRACTIONAL: $\pm 1/32$
 ANGULAR: MACH ± 0.05 BEND $\pm 1^\circ$
 TWO PLACE DECIMAL ± 0.25
 THREE PLACE DECIMAL ± 0.10

MATERIAL: 14 or 16GA SS 304		
FINISH:		
DO NOT SCALE DRAWING		
NAME		DATE
DRAWN BY	HUNTER BABICH	9/2/2025
CHECKED BY		

BENG		
DESCRIPTION HONDA RC51 (SP2): RIGHT SPAL FAN ADAPTER BRACKET ADAPTER FOR 30103013/30103011		
SIZE A	DWG. NO. RC51 - SPAL Bracket (R)	REV 1
SCALE: 3:4	- OEM MOUNT -	SHEET 1 OF 4



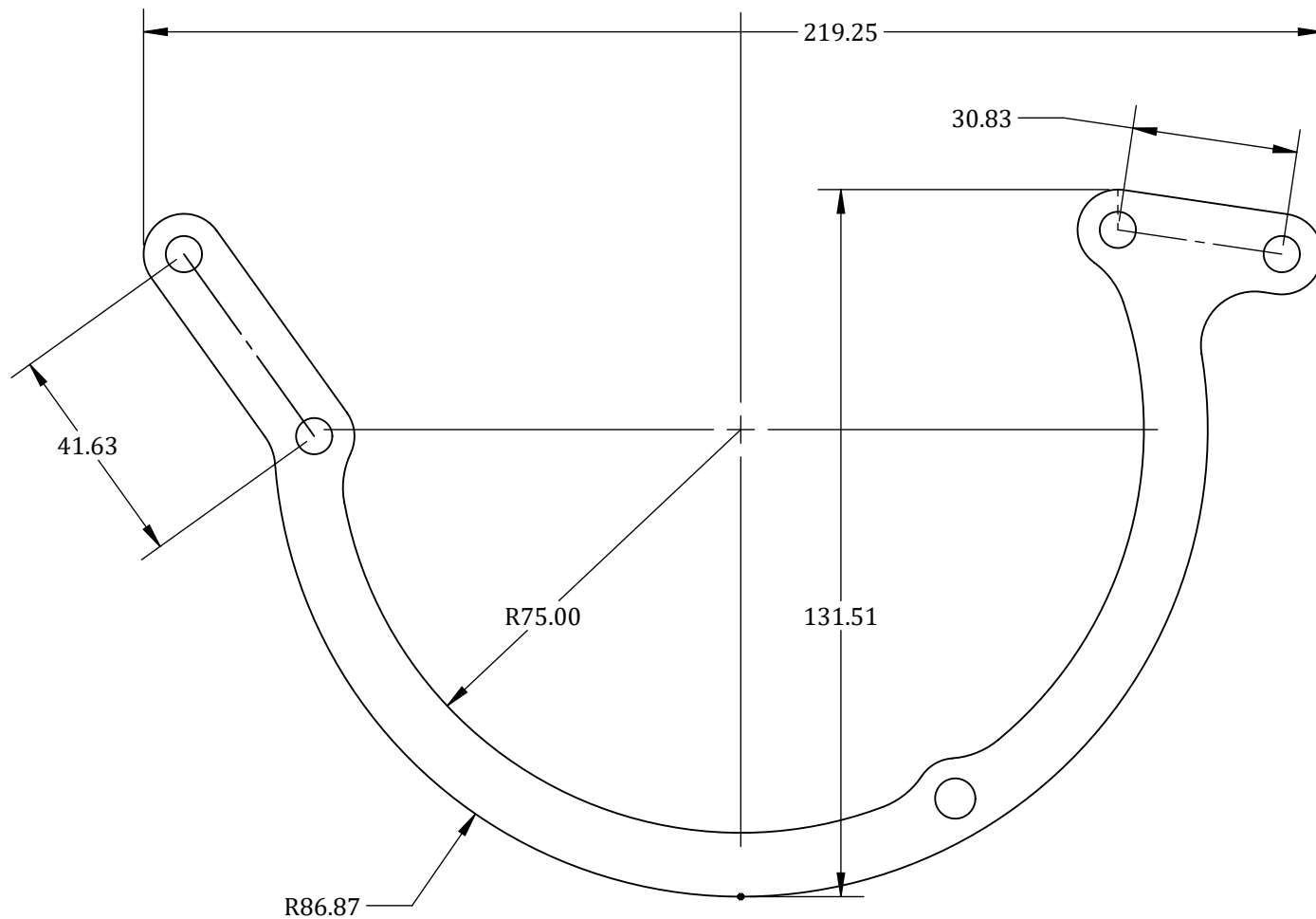
UNLESS OTHERWISE SPECIFIED:
 DIMENSIONS ARE IN MM
 TOLERANCES:
 FRACTIONAL: $\pm 1/32$
 ANGULAR: MACH ± 0.05 BEND $\pm 1^\circ$
 TWO PLACE DECIMAL ± 0.25
 THREE PLACE DECIMAL ± 0.10

MATERIAL: 14 or 16GA SS 304		
FINISH:		
DO NOT SCALE DRAWING		
NAME		DATE
DRAWN BY	HUNTER BABICH	9/2/2025
CHECKED BY		

BENG

DESCRIPTION
 HONDA RC51 (SP2): RIGHT SPAL FAN
 ADAPTER BRACKET ADAPTER FOR
 30103013/30103011

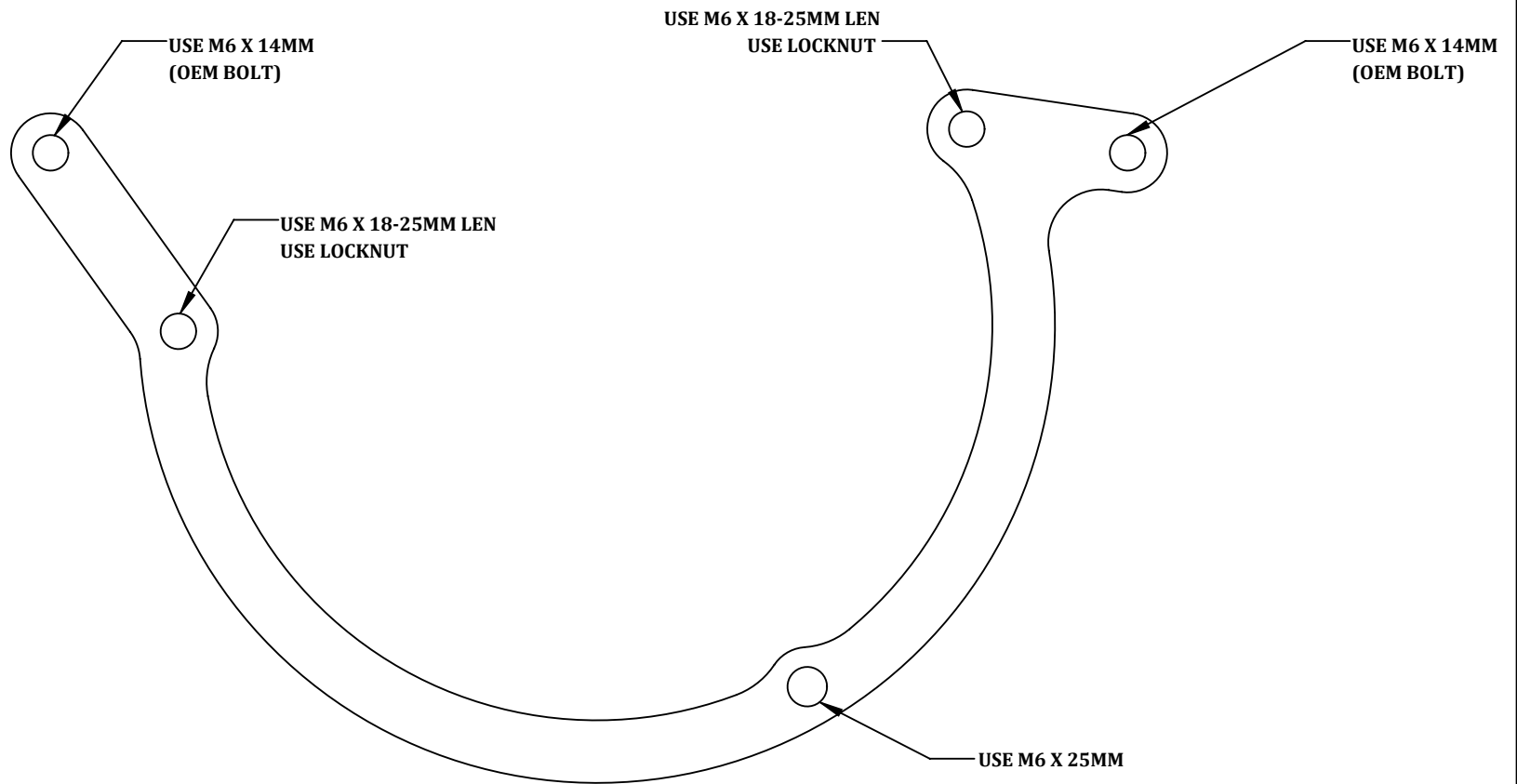
SIZE A	DWG. NO. RC51 - SPAL Bracket (R)	REV 1
SCALE: 3:4	- SPAL MOUNT -	SHEET 2 OF 4



UNLESS OTHERWISE SPECIFIED:
 DIMENSIONS ARE IN MM
 TOLERANCES:
 FRACTIONAL: $\pm 1/32$
 ANGULAR: MACH ± 0.05 BEND $\pm 1^\circ$
 TWO PLACE DECIMAL ± 0.25
 THREE PLACE DECIMAL ± 0.10

MATERIAL: 14 or 16GA SS 304		
FINISH:		
DO NOT SCALE DRAWING		
NAME		DATE
DRAWN BY	HUNTER BABICH	9/2/2025
CHECKED BY		

BENG		
DESCRIPTION		
HONDA RC51 (SP2): RIGHT SPAL FAN ADAPTER BRACKET ADAPTER FOR 30103013/30103011		
SIZE A	DWG. NO. RC51 - SPAL Bracket (R)	REV 1
SCALE: 3:4	-RELATIONAL-	SHEET 3 OF 4



UNLESS OTHERWISE SPECIFIED:	
DIMENSIONS ARE IN MM	
TOLERANCES:	
FRACTIONAL: $\pm 1/32$	
ANGULAR: MACH ± 0.05 BEND $\pm 1^\circ$	
TWO PLACE DECIMAL ± 0.25	
THREE PLACE DECIMAL ± 0.10	

MATERIAL:		14 or 16GA SS 304
FINISH:		
DO NOT SCALE DRAWING		
NAME		DATE
DRAWN BY	HUNTER BABICH	9/2/2025
CHECKED BY		

<i>BENG</i>		
DESCRIPTION		
HONDA RC51 (SP2): RIGHT SPAL FAN ADAPTER BRACKET ADAPTER FOR 30103013/30103011		
SIZE A	DWG. NO. RC51 - SPAL Bracket (R)	REV 1
SCALE: 3:4	- BOLTS -	SHEET 4 OF 4